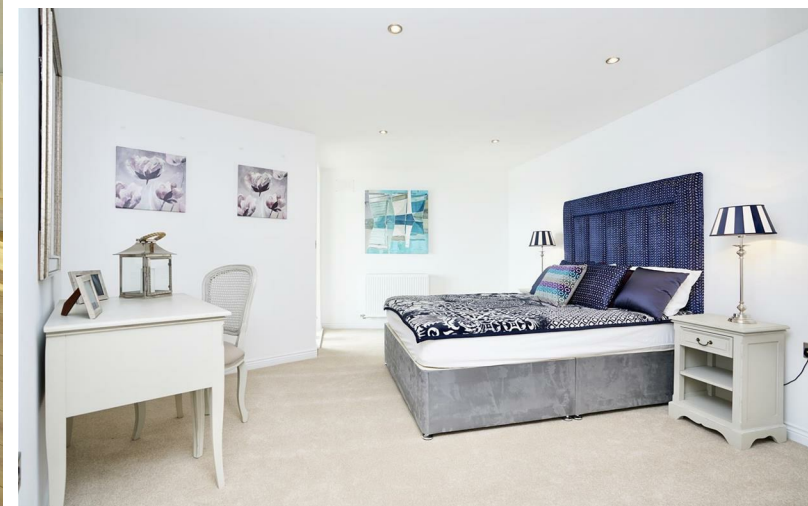




Mariner Point Brighton Road | | Shoreham-By-Sea | BN43 6RT





Mariner Point Brighton Road | | Shoreham-By-Sea | BN43 6RT

£460,000

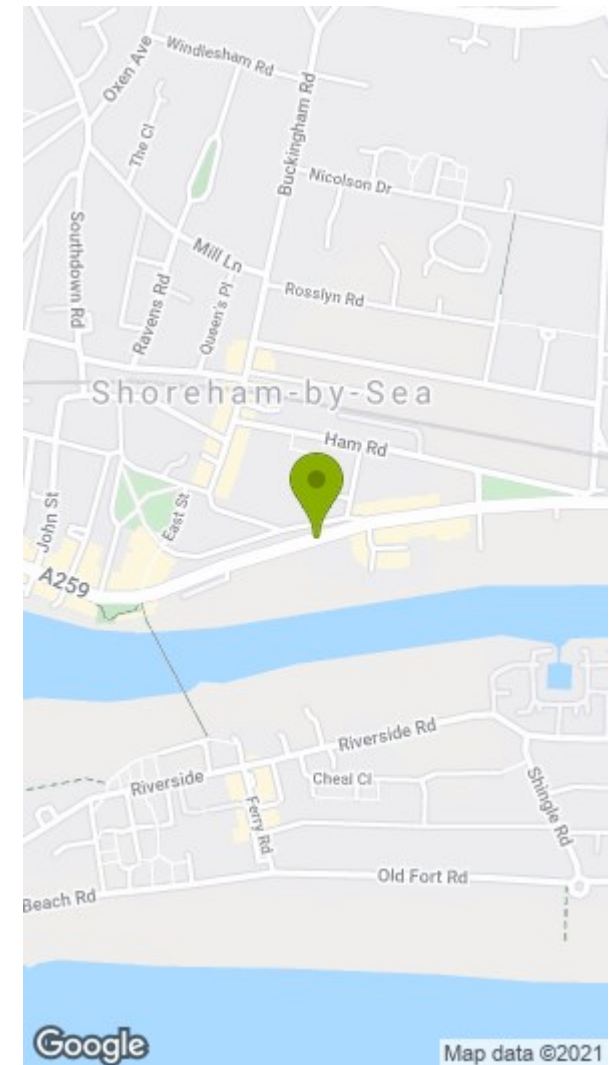
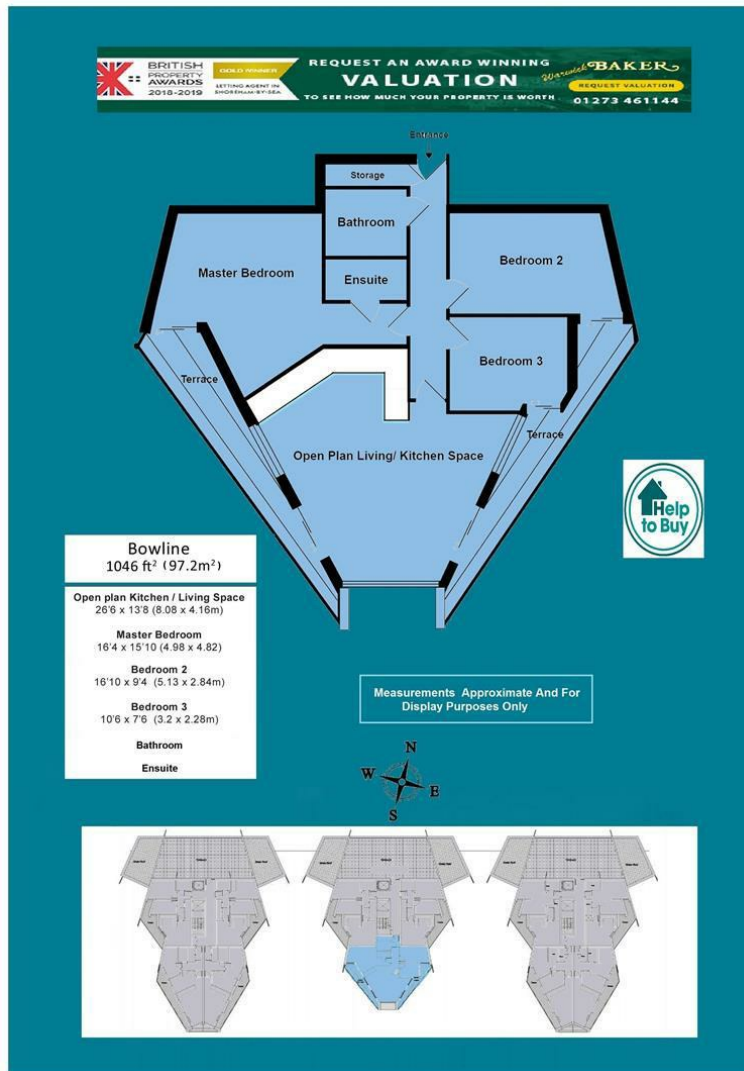
PHASE 2 - VIEWS OF SHOREHAM, THE RIVER AND FOOTBRIDGE

BOWLLINE 1046 SQ FT - 3 BEDROOMS, 2 BATHROOMS - SECOND FLOOR - SOUTHERLY ASPECT

HELP TO BUY SCHEME AVAILABLE - CALL NOW FOR MORE DETAILS 01273 461144

Mariner Point is a stunning collection of one, two and three bedroom apartments located in the harbour town of Shoreham-by-sea.





Disclaimer

* These particulars are intended to give a fair and substantially correct overall description for the guidance of intending purchasers and do not constitute an offer or part of a contract. Prospective purchasers and/or lessees ought to seek their own independent professional advice.

* All descriptions, dimensions, areas, references to condition and necessary permissions for use and occupation and other details are given in good faith and are believed to be correct, but any intending purchasers should not rely on them as statements or representations of fact, but must satisfy themselves by inspection or otherwise as to the correctness of each of them.

* All measurements are approximate

Energy Efficiency Rating		Environmental Impact (CO ₂) Rating	
Current	Potential	Current	Potential
Very energy efficient - lower running costs		Very environmentally friendly - lower CO ₂ emissions	
(92 plus) A		(92 plus) A	
(81-91) B		(81-91) B	
(69-80) C		(69-80) C	
(55-68) D		(55-68) D	
(39-54) E		(39-54) E	
(21-38) F		(21-38) F	
(1-20) G		(1-20) G	
Not energy efficient - higher running costs		Not environmentally friendly - higher CO ₂ emissions	
England & Wales		England & Wales	
EU Directive 2002/91/EC		EU Directive 2002/91/EC	